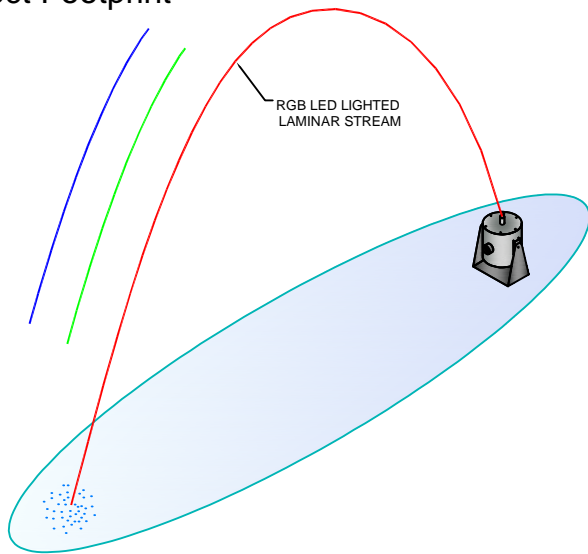
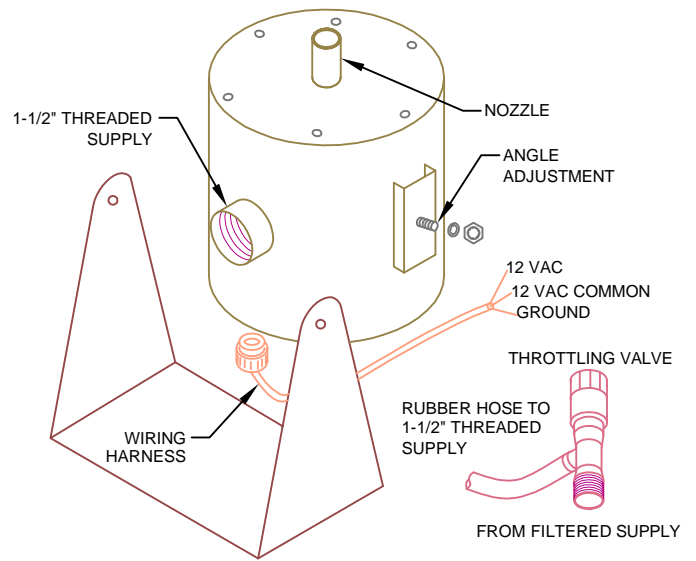


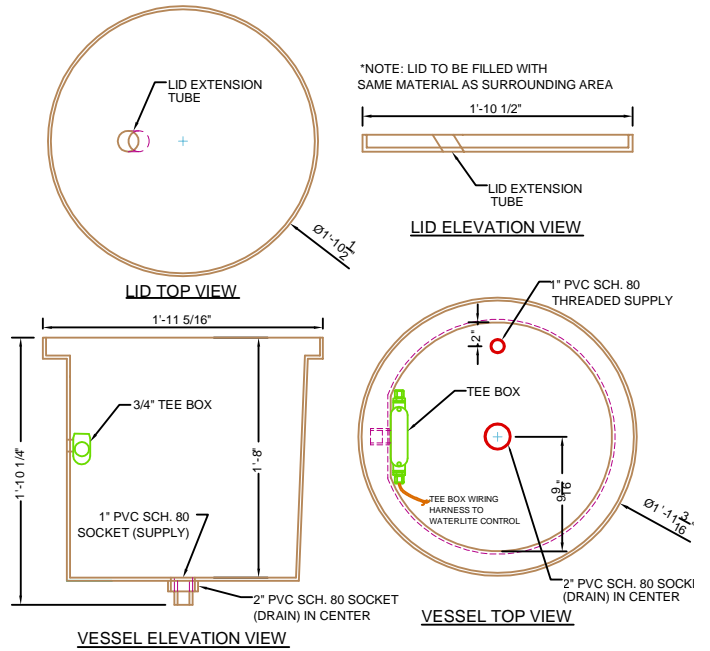
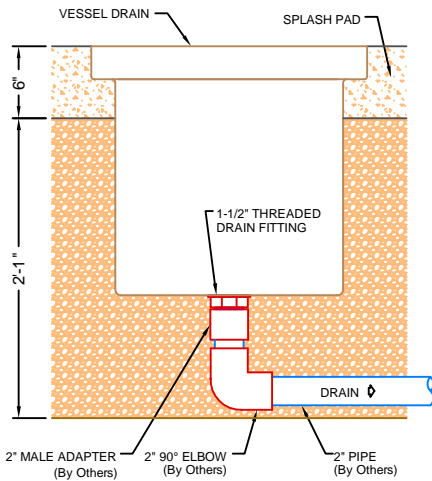
Effect Footprint



Laminar Nozzle



Anchor Assembly



Specifications

Description:
Patented lighted laminar stream technology using RGB LED lighting to change the spectrum up to 300 discrete colors.

Mounting:
Top of vessel is flush with finish surface. Body is completely buried in concrete and backfill.

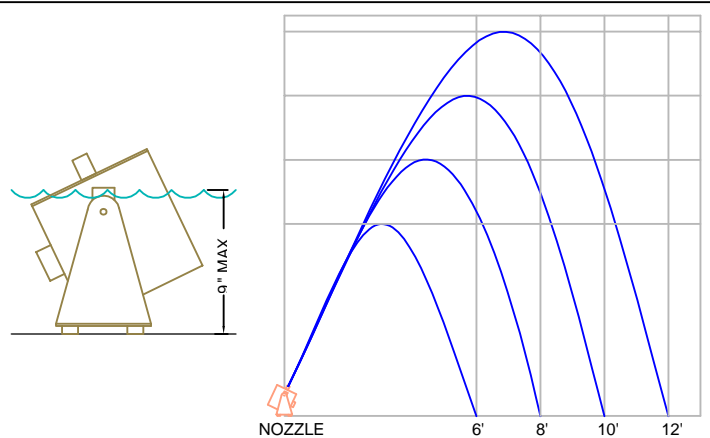
Materials:
Vessel - Fiberglass construction.
Nozzle - All Stainless Steel Construction.
Anchor Flange & Fasteners - All Stainless Steel Construction.

Hydraulics:
Supply 10 GPM @ 20 PSI, Drain 20 GPM Gravity.

Supply & Drain Line:
Supply minimum 1", Drain Minimum 2".

Light & Electrical:
12v DC through 3/4" conduit for RGB LED Lights.

Controller:
Not required.



LED Lighted Laminar Nozzle



St. Louis, MO * Chicago, IL
800-932-3123
Fax 636-677-8989

PN - LN-1

DATE: 3/7/06

SCALE: 3/4" = 1'

WWW.WATERWORKSINTERNATIONAL.COM