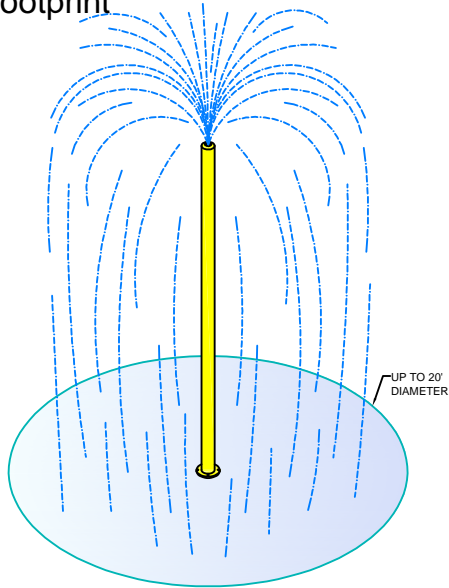
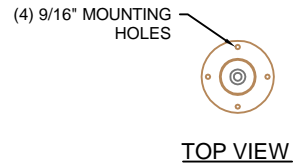


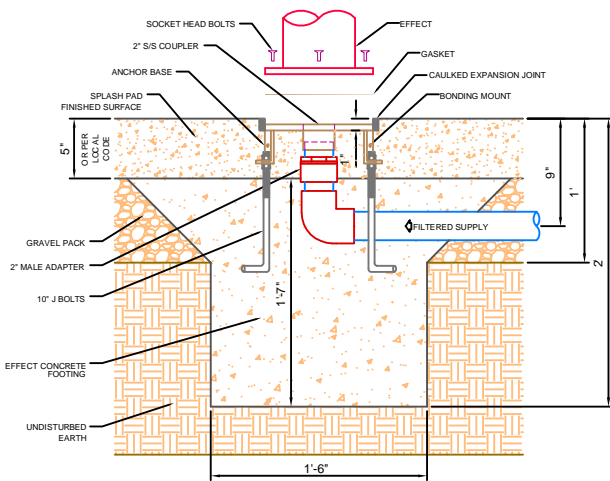
Effect Footprint



Geyser Tower



Anchor Assembly



Specifications

Materials:

Body - All Stainless Steel construction.
Anchor Flange & Fasteners - All Stainless Steel Construction.

Finish:

Polane HS plus an industrial urethane finish that is resistant to chlorine & is UV stabilized.

Hydraulics:

50 to 100 GPM

Supply Line:

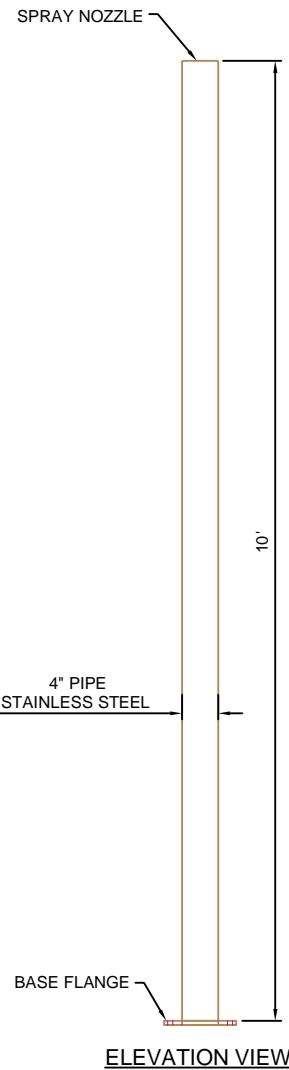
Minimum 2"

Colors:

Red, Blue, Yellow, White, Forest Green, Sea Blue, Pink, Orange, Light Green, Brown, Black & Purple.

Controller:

Optional - One solenoid input.



Geyser Tower Water Feature



St. Louis, MO * Chicago, IL
800-932-3123
Fax 636-376-3242

PN - 11037

DATE: 1/7/09

SCALE: 1/2" = 1'

WWW.WATERWORKSINTERNATIONAL.COM