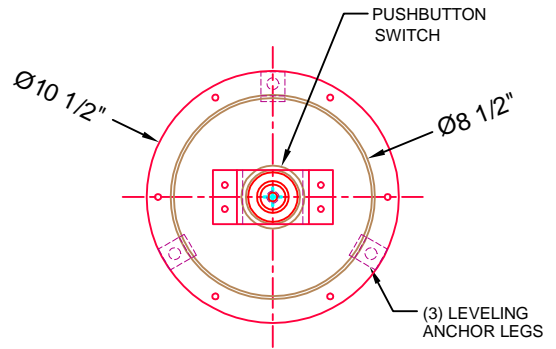
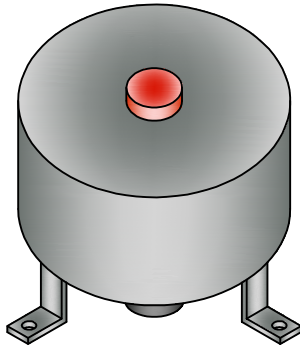
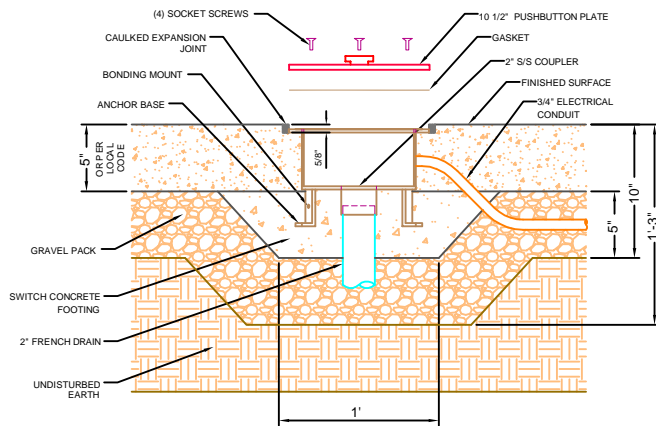


00000 Activation Foot Switch



TOP VIEW

Anchor Assembly



Specifications

Mounting:

Top of switch is flush with finish surface. Body is completely burried in concrete.

Materials:

Body - All Stainless Steel construction.
Anchor Flange & Fasteners - All Stainless Steel Construction.

Drain Line:

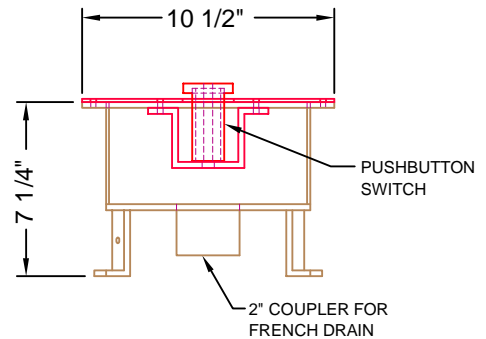
Minimum 2"

Electrical:

3/4" Electrical Conduit with 16 Gauge wires

Controller:

Required - One Input.



ELEVATION VIEW

Activation Foot Switch



St. Louis, MO * Chicago, IL
800-932-3123
Fax 636-677-8989

PN - 00000

DATE: 3/28/07

SCALE: 1" = 1'

WWW.WATERWORKSINTERNATIONAL.COM